
Product Datasheet

MIF Antibody / Macrophage migration inhibitory factor (orb1824023)

Description

Macrophage migration inhibitory factor, known as


Species/Host

Mouse

Reactivity

Human

Conjugation

Unconjugated

Tested Applications

IHC-P, WB

IHC staining of FFPE human prostate tiss...

Immunogen

A recombinant fragment of human protein was used as the immunogen for the Glycosylation inhibiting factor antibody.

Storage

Aliquot the Glycosylation inhibiting factor antibody and store frozen at -20°C or colder. Avoid repeated freeze-thaw cycles.

Note

For research use only

Formula

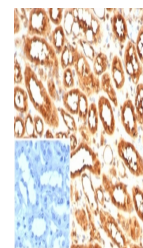
1 mg/ml in 1X PBS; BSA free, sodium azide free

Isotype

Mouse IgG

Clonality

Monoclonal

Uniprot ID
[P14174](#)


IHC staining of FFPE human kidney tissue...

Hazard Information

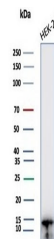
This Glycosylation inhibiting factor antibody is available for research use only.

Dilution Range

Western blot: 1-2ug/ml, Immunohistochemistry (FFPE): 1-2ug/ml for 30 min at RT

Expiration Date

12 months from date of receipt.



Western blot testing of human HEK293 cel...