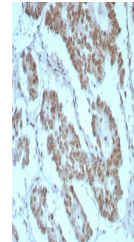


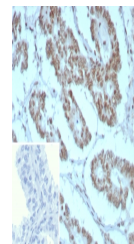
Product Datasheet

Integrase interactor 1 Antibody / INI-1 / SMARCB1 / BAF47 (orb1824017)

| | |
|----------------------------|--|
| Description | The INI-1 gene which encodes a functionally uncharacterized protein component of the hSWI/SNF chroma... |
| Species/Host | Rabbit |
| Reactivity | Human |
| Conjugation | Unconjugated |
| Tested Applications | IHC-P |
| Immunogen | A recombinant partial protein sequence (within amino acids 1-200) from the human protein was used as the immunogen for the BAF47 antibody. |
| Storage | Aliquot the BAF47 antibody and store frozen at -20°C or colder. Avoid repeated freeze-thaw cycles. |
| Note | For research use only |
| Formula | 1 mg/ml in 1X PBS; BSA free, sodium azide free |
| Isotype | Rabbit IgG, kappa |
| Clonality | Recombinant |
| Uniprot ID | Q12824 |
| Hazard Information | This BAF47 antibody is available for research use only. |
| Dilution Range | Immunohistochemistry (FFPE): 1-2ug/ml for 30 min at RT |
| Expiration Date | 12 months from date of receipt. |



IHC staining of FFPE human prostate tiss...



IHC staining of FFPE human prostate tiss...