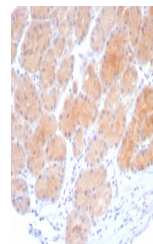


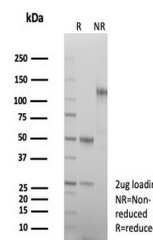
Product Datasheet

Beta-Parvin Antibody (orb1824006)

Description	Beta-parvin, also known as affixin, is a focal adhesion protein belonging to a family of ILKbinding ...
Species/Host	Rabbit
Reactivity	Human
Conjugation	Unconjugated
Tested Applications	IHC-P
Immunogen	The N-terminal region (residues 1-91) of the human protein was used as the immunogen for the Beta-Parvin antibody.
Storage	Aliquot the Beta-Parvin antibody and store frozen at -20°C or colder. Avoid repeated freeze-thaw cycles.
Note	For research use only
Formula	0.2 mg/ml in 1X PBS with 0.1 mg/ml BSA (US sourced), 0.05% sodium azide
Isotype	Rabbit IgG, kappa
Clonality	Recombinant
Uniprot ID	Q9HBI1
Hazard Information	This Beta-Parvin antibody is available for research use only.
Dilution Range	Immunohistochemistry (FFPE): 1-2ug/ml for 30 min at RT
Expiration Date	12 months from date of receipt.



IHC staining of FFPE human stomach tissu...



SDS-PAGE analysis of purified, BSA-free ...