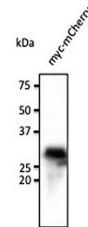


Product Datasheet

myc antibody (orb182398)

Description	Goat polyclonal antibody to myc epitope tag. c-Myc epitope tag is useful for the labelling and detec...
Species/Host	Goat
Conjugation	Unconjugated
Tested Applications	WB
Immunogen	Purified recombinant peptide EQKLISEEDL corresponding to amino acids 410-419 of Human c-Myc produced in E. coli
Target	myc
Preservatives	PBS, 20% glycerol and 0.05% sodium azide
Form/Appearance	Polyclonal antibody supplied as a 200 µl (3 mg/ml) aliquot in PBS, 20% glycerol and 0.05% sodium azide. This antibody is epitope-affinity purified from goat antiserum.
Concentration	3 mg/ml
Storage	Store at -20°C for long-term storage. Store at 2-8°C for up to one month.
Note	For research use only
Application notes	The antibody solution should be gently mixed before use.
Protein Sequence	EQKLISEEDLNPEQKLISEEDL
Isotype	IgG
Clonality	Polyclonal
Dilution Range	WB:1:500-1:2,000
Expiration Date	12 months from date of receipt.



Western blot analysis of 293 cell line l...