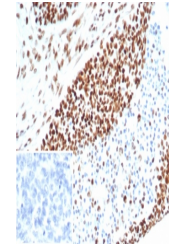


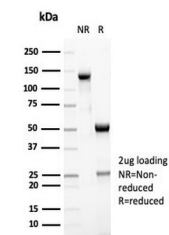
Product Datasheet

MSH6 Antibody (orb1823966)

| | |
|----------------------------|---|
| Description | The finding that mutations in DNA mismatch repair genes are associated with hereditary nonpolyposis ... |
| Species/Host | Rabbit |
| Reactivity | Human |
| Conjugation | Unconjugated |
| Tested Applications | ELISA, IHC-P |
| Immunogen | A recombinant partial protein sequence (within amino acids 374-540) from the human protein was used as the immunogen for the MSH6 antibody. |
| Storage | Aliquot the MSH6 antibody and store frozen at -20°C or colder. Avoid repeated freeze-thaw cycles. |
| Note | For research use only |
| Formula | 1 mg/ml in 1X PBS; BSA free, sodium azide free |
| Isotype | Rabbit IgG, kappa |
| Clonality | Recombinant |
| Uniprot ID | P52701 |
| Hazard Information | This MSH6 antibody is available for research use only. |
| Dilution Range | ELISA (Order BSA-free format for coating), Immunohistochemistry (FFPE): 1-2ug/ml for 30 min at RT |
| Expiration Date | 12 months from date of receipt. |



IHC staining of FFPE human ovarian carcinoma...



SDS-PAGE analysis of purified, BSA-free ...