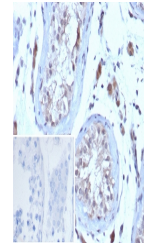


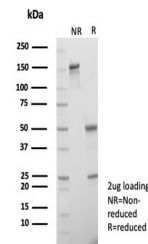
Product Datasheet

hCG Receptor / LH Receptor Antibody (orb1823932)

Description	Recognizes a protein of 78-85kDa, which is identified as Luteinizing hormone / choriogonadotropin re...
Species/Host	Mouse
Reactivity	Human
Conjugation	Unconjugated
Tested Applications	IHC-P
Immunogen	A recombinant partial protein sequence (within amino acids 100-300) from the human protein was used as the immunogen for the Choriogonadotropin Receptor antibody.
Storage	Aliquot the Choriogonadotropin Receptor antibody and store frozen at -20°C or colder. Avoid repeated freeze-thaw cycles.
Note	For research use only
Formula	0.2 mg/ml in 1X PBS with 0.1 mg/ml BSA (US sourced), 0.05% sodium azide
Isotype	Mouse IgG1, kappa
Clonality	Monoclonal
Uniprot ID	P22888
Hazard Information	This Choriogonadotropin Receptor antibody is available for research use only.
Dilution Range	Immunohistochemistry (FFPE): 1-2ug/ml for 30 min at RT
Expiration Date	12 months from date of receipt.



IHC staining of FFPE human testis tissue...



SDS-PAGE analysis of purified, BSA-free ...