
Product Datasheet

hCG Receptor / LH Receptor Antibody (orb1823928)

Description

Recognizes a protein of 78-85kDa, which is identified


Species/Host

Mouse

Reactivity

Human

Conjugation

Unconjugated

Tested Applications

IHC-P

IHC staining of FFPE human ovarian carci...

Immunogen

A recombinant partial protein sequence (within amino acids 100-300) from the human protein was used as the immunogen for the Luteinizing Hormone Receptor antibody.

Storage

Aliquot the Luteinizing Hormone Receptor antibody and store frozen at -20°C or colder. Avoid repeated freeze-thaw cycles.

Note

For research use only

Formula

0.2 mg/ml in 1X PBS with 0.1 mg/ml BSA (US sourced), 0.05% sodium azide

Isotype

Mouse IgG2, kappa

Clonality

Monoclonal

Uniprot ID

P22888

Hazard Information

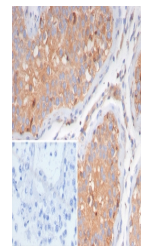
This Luteinizing Hormone Receptor antibody is available for research use only.

Dilution Range

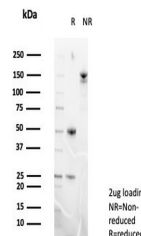
Immunohistochemistry (FFPE): 1-2ug/ml for 30 min at RT

Expiration Date

12 months from date of receipt.



IHC staining of FFPE human testis tissue...



SDS-PAGE analysis of purified, BSA-free ...