
Product Datasheet

hCG Receptor / LH Receptor Antibody (orb1823927)

Description

Recognizes a protein of 78-85kDa, which is identified



Species/Host

Mouse

Reactivity

Human

Conjugation

Unconjugated

Tested Applications

IHC-P

IHC staining of FFPE human ovarian carci...

Immunogen

A recombinant partial protein sequence (within amino acids 100-300) from the human protein was used as the immunogen for the Luteinizing Hormone Receptor antibody.

Storage

Aliquot the Luteinizing Hormone Receptor antibody and store frozen at -20°C or colder. Avoid repeated freeze-thaw cycles.

Note

For research use only

Formula

1 mg/ml in 1X PBS; BSA free, sodium azide free

Isotype

Mouse IgG2, kappa

Clonality

Monoclonal

Uniprot ID

P22888

Hazard Information

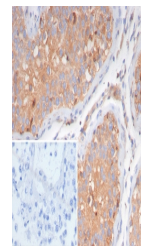
This Luteinizing Hormone Receptor antibody is available for research use only.

Dilution Range

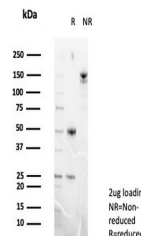
Immunohistochemistry (FFPE): 1-2ug/ml for 30 min at RT

Expiration Date

12 months from date of receipt.



IHC staining of FFPE human testis tissue...



SDS-PAGE analysis of purified, BSA-free ...