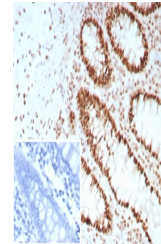


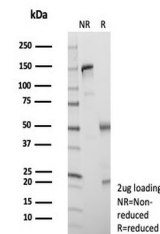
Product Datasheet

SATB2 Antibody (orb1823915)

Description	SATB2 is a DNA binding protein that specifically binds nuclear matrix attachment regions. It is invo...
Species/Host	Rabbit
Reactivity	Human
Conjugation	Unconjugated
Tested Applications	IHC-P
Immunogen	A synthetic peptide corresponding to human SATB2 protein (within amino acids 200-300) was used as the immunogen for the SATB2 antibody.
Storage	Aliquot the SATB2 antibody and store frozen at -20°C or colder. Avoid repeated freeze-thaw cycles.
Note	For research use only
Formula	1 mg/ml in 1X PBS; BSA free, sodium azide free
Isotype	Rabbit IgG, kappa
Clonality	Recombinant
Uniprot ID	Q9UPW6
Hazard Information	This SATB2 antibody is available for research use only.
Dilution Range	Immunohistochemistry (FFPE): 1-2ug/ml for 30 min at RT
Expiration Date	12 months from date of receipt.



IHC staining of FFPE human colon carcino...



SDS-PAGE analysis of purified, BSA-free ...