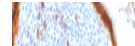

Product Datasheet

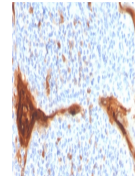
**IL1RA Antibody / Interleukin-1 Receptor
Antagonist / IL1RN (orb1823881)**

Description

Two forms of interleukin-1, designated IL-1a and



by ...


Species/Host

Mouse

Reactivity

Human

Conjugation

Unconjugated

Tested Applications

IHC-P

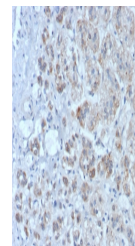
IHC staining of FFPE human tonsil tissue...

Immunogen

A recombinant partial protein sequence (within amino acids 1-200) from the human protein was used as the immunogen for the Interleukin-1 Receptor Antagonist antibody.

Storage

Aliquot the Interleukin-1 Receptor Antagonist antibody and store frozen at -20°C or colder. Avoid repeated freeze-thaw cycles.


Note

For research use only

Formula

0.2 mg/ml in 1X PBS with 0.1 mg/ml BSA (US sourced), 0.05% sodium azide

IHC staining of FFPE human adrenal gland...

Isotype

Mouse IgG2, kappa

Clonality

Monoclonal

Uniprot ID

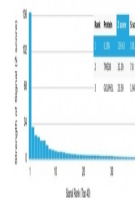
P18510

Hazard Information

This Interleukin-1 Receptor Antagonist antibody is available for research use only.

Dilution Range

Immunohistochemistry (FFPE): 1-2ug/ml for 30 min at RT



Analysis of a HuProt (TM) microarray con...