

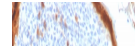
---

## Product Datasheet

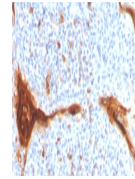
**IL1RA Antibody / Interleukin-1 Receptor  
Antagonist / IL1RN (orb1823880)**

**Description**

Two forms of interleukin-1, designated IL-1a and



by ...


**Species/Host**

Mouse

**Reactivity**

Human

**Conjugation**

Unconjugated

**Tested Applications**

IHC-P

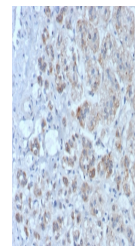
IHC staining of FFPE human tonsil tissue...

**Immunogen**

A recombinant partial protein sequence (within amino acids 1-200) from the human protein was used as the immunogen for the Interleukin-1 Receptor Antagonist antibody.

**Storage**

Aliquot the Interleukin-1 Receptor Antagonist antibody and store frozen at -20°C or colder. Avoid repeated freeze-thaw cycles.


**Note**

For research use only

**Formula**

0.2 mg/ml in 1X PBS with 0.1 mg/ml BSA (US sourced), 0.05% sodium azide

IHC staining of FFPE human adrenal gland...

**Isotype**

Mouse IgG2, kappa

**Clonality**

Monoclonal

**Uniprot ID**

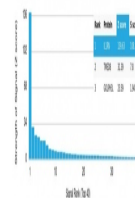
**P18510**

**Hazard Information**

This Interleukin-1 Receptor Antagonist antibody is available for research use only.

**Dilution Range**

Immunohistochemistry (FFPE): 1-2ug/ml for 30 min at RT



Analysis of a HuProt (TM) microarray con...