

---

## Product Datasheet

### Mast Cell Chymase/CMA1 Antibody (orb182387)

**Description**

Mast Cell Chymase/CMA1 Antibody

**Species/Host**

Rabbit

**Reactivity**

Human, Mouse, Rat

**Conjugation**

Unconjugated

**Tested Applications**

IHC, WB

**Immunogen**

E.coli-derived human CMA1 recombinant protein (Position: I22-N247). Human CMA1 shares 75% and 74% amino acid (aa) sequences identity with mouse and rat CMA1, respectively.

**Form/Appearance**

Lyophilized

**Concentration**

Adding 0.2 ml of distilled water will yield a concentration of 500 µg/ml.

**Storage**

Store at -20°C for one year from date of receipt. After reconstitution, at 4°C for one month. It can also be aliquotted and stored frozen at -20°C for six months. Avoid repeated freeze-thaw cycles.

**Note**

For research use only

**Application notes**

WB: The detection limit for CMA1 is approximately 0.25ng/lane under reducing conditions. Tested Species: In-house tested species with positive results. By Heat: Boiling the paraffin sections in 10mM citrate buffer, pH6.0, for 20mins is required for the staining of formalin/paraffin sections. Other applications have not been tested. Optimal dilutions should be determined by end users. . Add 0.2ml of distilled water will yield a concentration of 500ug/ml.

**Isotype**

Rabbit IgG

**Clonality**

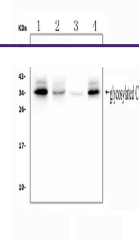
Polyclonal

**MW**

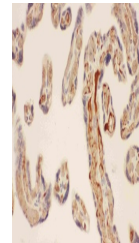
27325 MW

**Uniprot ID**
**P23946**
**Expiration Date**

12 months from date of receipt.



WB analysis of CMA1 using anti-CMA1 anti...



IHC analysis of CMA1 using anti-CMA1 ant...