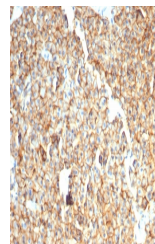


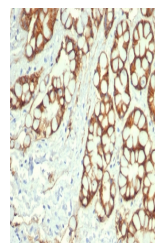
Product Datasheet

EpCAM Antibody (orb1823853)

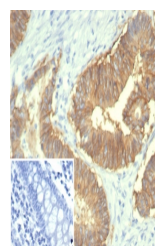
Description	EGP40 is a 40-43kDa transmembrane epithelial glycoprotein, also identified as epithelial specific an...
Species/Host	Mouse
Reactivity	Canine, Feline, Human
Conjugation	Unconjugated
Tested Applications	IHC-P
Immunogen	Recombinant full-length human protein was used as the immunogen for the EpCAM antibody.
Storage	Aliquot the EpCAM antibody and store frozen at -20°C or colder. Avoid repeated freeze-thaw cycles.
Note	For research use only
Formula	0.2 mg/ml in 1X PBS with 0.1 mg/ml BSA (US sourced), 0.05% sodium azide
Isotype	Mouse IgG1, kappa
Clonality	Recombinant
Uniprot ID	P16422
Hazard Information	This EpCAM antibody is available for research use only.
Dilution Range	Immunohistochemistry (FFPE): 1-2ug/ml for 30 min at RT
Expiration Date	12 months from date of receipt.



IHC staining of FFPE dog liver with EpCAM...



IHC staining of FFPE cat colon with EpCAM...



IHC staining of FFPE human colon tissue ...