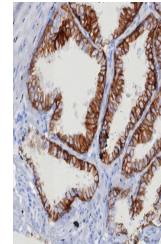


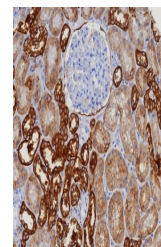
Product Datasheet

EpCAM Antibody (orb1823851)

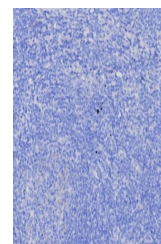
Description	EGP40, which is a 40-43kDa transmembrane epithelial glycoprotein, is also identified as epithelial s...
Species/Host	Rabbit
Reactivity	Human
Conjugation	Unconjugated
Tested Applications	IHC-P
Immunogen	A recombinant human EpCAM fragment from extracellular domain (within amino acids 100-224) was used as the immunogen for the EpCAM antibody.
Storage	Aliquot the EpCAM antibody and store frozen at -20°C or colder. Avoid repeated freeze-thaw cycles.
Note	For research use only
Formula	0.2 mg/ml in 1X PBS with 0.1 mg/ml BSA (US sourced), 0.05% sodium azide
Isotype	Rabbit IgG, kappa
Clonality	Recombinant
Uniprot ID	P16422
Hazard Information	This EpCAM antibody is available for research use only.
Dilution Range	Immunohistochemistry (FFPE): 1-2ug/ml for 30 min at RT
Expiration Date	12 months from date of receipt.



IHC staining of FFPE human prostate carc...



IHC testing of FFPE human kidney tissue ...



Negative control: IHC testing of FFPE hu...