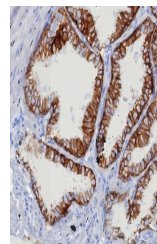


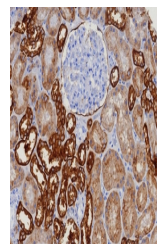
Product Datasheet

EpCAM Antibody (orb1823850)

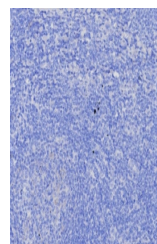
| | |
|----------------------------|---|
| Description | EGP40, which is a 40-43kDa transmembrane epithelial glycoprotein, is also identified as epithelial s... |
| Species/Host | Rabbit |
| Reactivity | Human |
| Conjugation | Unconjugated |
| Tested Applications | IHC-P |
| Immunogen | A recombinant human EpCAM fragment from extracellular domain (within amino acids 100-224) was used as the immunogen for the EpCAM antibody. |
| Storage | Aliquot the EpCAM antibody and store frozen at -20°C or colder. Avoid repeated freeze-thaw cycles. |
| Note | For research use only |
| Formula | 0.2 mg/ml in 1X PBS with 0.1 mg/ml BSA (US sourced), 0.05% sodium azide |
| Isotype | Rabbit IgG, kappa |
| Clonality | Recombinant |
| Uniprot ID | P16422 |
| Hazard Information | This EpCAM antibody is available for research use only. |
| Dilution Range | Immunohistochemistry (FFPE): 1-2ug/ml for 30 min at RT |
| Expiration Date | 12 months from date of receipt. |



IHC staining of FFPE human prostate carc...



IHC testing of FFPE human kidney tissue ...



Negative control: IHC testing of FFPE hu...