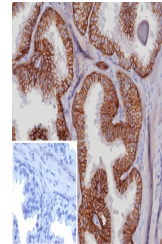


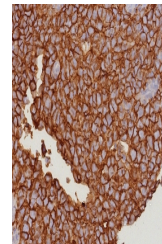
Product Datasheet

EpCAM Antibody (orb1823846)

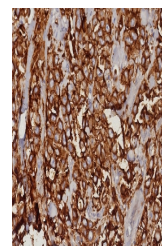
Description	Epitope of this mAb is mapped between aa 202-212 of EGP40, which is a 40-43kDa transmembrane epithel...
Species/Host	Rabbit
Reactivity	Human
Conjugation	Unconjugated
Tested Applications	IHC-P
Immunogen	A recombinant human EpCAM fragment from extracellular domain (within amino acids 100-224) was used as the immunogen for the EpCAM antibody. The epitope of this mAb is mapped between amino acids 202-212.
Storage	Aliquot the EpCAM antibody and store frozen at -20°C or colder. Avoid repeated freeze-thaw cycles.
Note	For research use only
Formula	1 mg/ml in 1X PBS; BSA free, sodium azide free
Isotype	Rabbit IgG, kappa
Clonality	Recombinant
Uniprot ID	P16422
Hazard Information	This EpCAM antibody is available for research use only.
Dilution Range	Immunohistochemistry (FFPE): 1-2ug/ml for 30 min at RT
Expiration Date	12 months from date of receipt.



IHC staining of FFPE human prostate carc...



IHC staining of FFPE human bladder tissu...



IHC staining of FFPE human mammary carci...