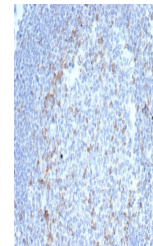


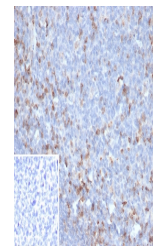
Product Datasheet

CTLA-4 Antibody / CD152 (orb1823832)

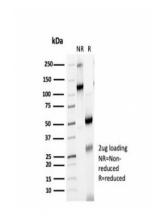
Description	Cytotoxic T lymphocyte-associated antigen-4 (CTLA-4) is a member of the CD28 superfamily and is a ne...
Species/Host	Rabbit
Reactivity	Human
Conjugation	Unconjugated
Tested Applications	IHC-P
Immunogen	A recombinant fragment of human protein was used as the immunogen for the Cytotoxic T-lymphocyte protein 4 antibody.
Storage	Aliquot the Cytotoxic T-lymphocyte protein 4 antibody and store frozen at -20°C or colder. Avoid repeated freeze-thaw cycles.
Note	For research use only
Formula	0.2 mg/ml in 1X PBS with 0.1 mg/ml BSA (US sourced), 0.05% sodium azide
Isotype	Rabbit IgG, kappa
Clonality	Recombinant
Uniprot ID	P16410
Hazard Information	This Cytotoxic T-lymphocyte protein 4 antibody is available for research use only.
Dilution Range	Immunohistochemistry (FFPE): 1-2ug/ml for 30 min at RT
Expiration Date	12 months from date of receipt.



IHC staining of FFPE human tonsil tissue...



IHC staining of FFPE human tonsil tissue...



SDS-PAGE analysis of purified, BSA-free ...