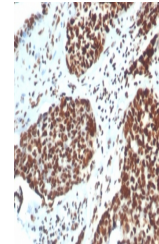


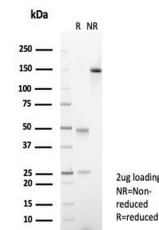
Product Datasheet

Ku80 Antibody / XRCC5 (orb1823784)

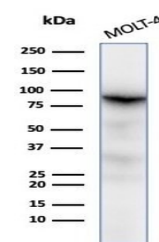
Description	The Ku protein is localized in the nucleus and is composed of subunits referred to as Ku-70 (or p70)...
Species/Host	Mouse
Reactivity	Human
Conjugation	Unconjugated
Tested Applications	IHC-P, WB
Immunogen	A recombinant partial protein sequence (within amino acids 300-500) from the human protein was used as the immunogen for the XRCC5 antibody.
Storage	Aliquot the XRCC5 antibody and store frozen at -20°C or colder. Avoid repeated freeze-thaw cycles.
Note	For research use only
Formula	0.2 mg/ml in 1X PBS with 0.1 mg/ml BSA (US sourced), 0.05% sodium azide
Isotype	Mouse IgG1 + IgG2b, kappa
Clonality	Monoclonal
Uniprot ID	P13010
Hazard Information	This XRCC5 antibody is available for research use only.
Dilution Range	Western blot: 1-2ug/ml, Immunohistochemistry (FFPE): 1-2ug/ml for 30 min at RT
Expiration Date	12 months from date of receipt.



IHC staining of FFPE human colon tissue ...



SDS-PAGE analysis of purified, BSA-free ...



Western blot testing of human MOLT-4 cel...