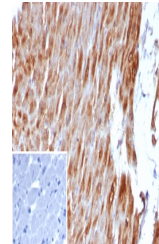


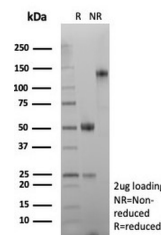
Product Datasheet

Desmin Antibody (orb1823751)

Description	Cytoskeletal intermediate filaments (IFs) constitute a diverse group of proteins that are expressed ...
Species/Host	Rabbit
Reactivity	Human
Conjugation	Unconjugated
Tested Applications	IHC-P
Immunogen	A recombinant partial protein sequence (within amino acids 270-470) from the human protein was used as the immunogen for the Desmin antibody.
Storage	Aliquot the Desmin antibody and store frozen at -20°C or colder. Avoid repeated freeze-thaw cycles.
Note	For research use only
Formula	0.2 mg/ml in 1X PBS with 0.1 mg/ml BSA (US sourced), 0.05% sodium azide
Isotype	Rabbit IgG, kappa
Clonality	Recombinant
Uniprot ID	P17661
Hazard Information	This Desmin antibody is available for research use only.
Dilution Range	Immunohistochemistry (FFPE): 1-2ug/ml for 30 min at RT
Expiration Date	12 months from date of receipt.



IHC staining of FFPE human heart muscle ...



SDS-PAGE analysis of purified, BSA-free ...