

---

## Product Datasheet

**FEV Antibody / PET-1 / PC12 ETS factor 1  
(orb1823739)**

**Description**

Ets-1 is the prototype member of a family of genes


**Species/Host**

Mouse

**Reactivity**

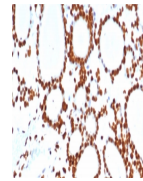
Human

**Conjugation**

Unconjugated

**Tested Applications**

IHC-P



IHC staining of FFPE human thyroid tissue...

**Immunogen**

A recombinant partial protein sequence (within amino acids 1-200) from the human protein was used as the immunogen for the PET-1 antibody.

**Storage**

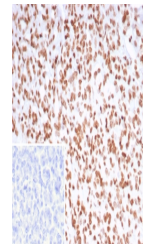
Aliquot the PET1 antibody and store frozen at -20°C or colder. Avoid repeated freeze-thaw cycles.

**Note**

For research use only

**Formula**

0.2 mg/ml in 1X PBS with 0.1 mg/ml BSA (US sourced), 0.05% sodium azide



IHC staining of FFPE human pancreas tissue...

**Isotype**

Mouse IgG1, kappa

**Clonality**

Monoclonal

**Uniprot ID**

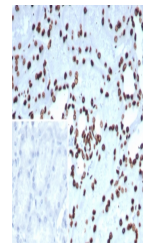
[Q99581](#)

**Hazard Information**

This PET-1 antibody is available for research use only.

**Dilution Range**

Immunohistochemistry (FFPE): 1-2ug/ml for 30 min at RT



IHC staining of FFPE human kidney tissue...

**Expiration Date**

12 months from date of receipt.