
Product Datasheet

**FEV Antibody / PET-1 / PC12 ETS factor 1
(orb1823738)**

Description

Ets-1 is the prototype member of a family of genes



Species/Host

Mouse

Reactivity

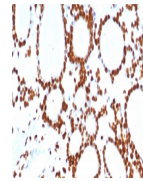
Human

Conjugation

Unconjugated

Tested Applications

IHC-P



IHC staining of FFPE human thyroid tissue...

Immunogen

A recombinant partial protein sequence (within amino acids 1-200) from the human protein was used as the immunogen for the PET-1 antibody.

Storage

Aliquot the PET1 antibody and store frozen at -20°C or colder. Avoid repeated freeze-thaw cycles.

Note

For research use only

Formula

1 mg/ml in 1X PBS; BSA free, sodium azide free

Isotype

Mouse IgG1, kappa

Clonality

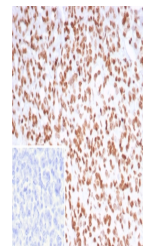
Monoclonal

Uniprot ID

[Q99581](#)

Hazard Information

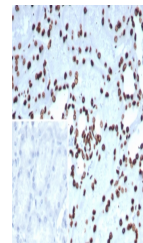
This PET-1 antibody is available for research use only.



IHC staining of FFPE human pancreas tissue...

Dilution Range

Immunohistochemistry (FFPE): 1-2ug/ml for 30 min at RT



IHC staining of FFPE human kidney tissue...

Expiration Date

12 months from date of receipt.