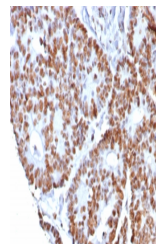


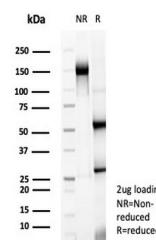
Product Datasheet

Nucleolin Antibody (orb1823715)

Description	Recognizes a protein of ~76kDa, which is identified as Nucleolin (NCL). It is the major nucleolar ph...
Species/Host	Rabbit
Reactivity	Human
Conjugation	Unconjugated
Tested Applications	IHC-P, WB
Immunogen	Recombinant full-length human NCL protein was used as the immunogen for the Nucleolin antibody.
Storage	Aliquot the Nucleolin antibody and store frozen at -20°C or colder. Avoid repeated freeze-thaw cycles.
Note	For research use only
Formula	0.2 mg/ml in 1X PBS with 0.1 mg/ml BSA (US sourced), 0.05% sodium azide
Isotype	Rabbit IgG, kappa
Clonality	Recombinant
Uniprot ID	P19338
Hazard Information	This Nucleolin antibody is available for research use only.
Dilution Range	Western blot: 1-2ug/ml, Immunohistochemistry (FFPE): 1-2ug/ml for 30 min at RT
Expiration Date	12 months from date of receipt.



IHC staining of FFPE human colon cancer ...



SDS-PAGE analysis of purified, BSA-free ...