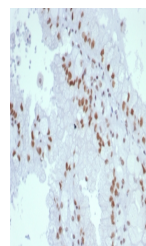


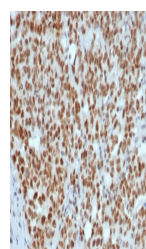
Product Datasheet

MLH1 Antibody / MutL Homolog 1 (orb1823689)

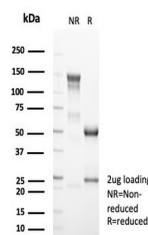
Description	This mAb recognizes a protein of 83kDa, identified as MLH1. Defects in MLH1 are the cause of heredit...
Species/Host	Mouse
Reactivity	Human
Conjugation	Unconjugated
Tested Applications	IHC-P
Immunogen	Recombinant full-length human MLH1 protein was used as the immunogen for the MutL Homolog 1 antibody.
Storage	Aliquot the MutL Homolog 1 antibody and store frozen at -20°C or colder. Avoid repeated freeze-thaw cycles.
Note	For research use only
Formula	0.2 mg/ml in 1X PBS with 0.1 mg/ml BSA (US sourced), 0.05% sodium azide
Isotype	Mouse IgG1, kappa
Clonality	Monoclonal
Uniprot ID	P40692
Hazard Information	This MutL Homolog 1 antibody is available for research use only.
Dilution Range	Immunohistochemistry (FFPE): 1-2ug/ml for 30 min at RT
Expiration Date	12 months from date of receipt.



IHC staining of FFPE human renal cell ca...



IHC staining of FFPE human Lynch disease...



SDS-PAGE analysis of purified, BSA-free ...