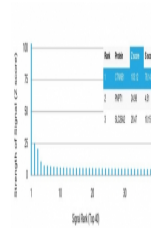


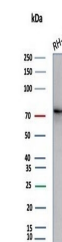
Product Datasheet

CTNNB1 Antibody / Beta Catenin (orb1823679)

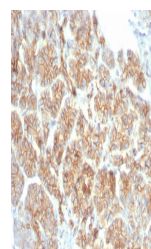
Description	Beta-catenin associates with the cytoplasmic portion of E-cadherin, which is necessary for the funct...
Species/Host	Mouse
Reactivity	Human
Conjugation	Unconjugated
Tested Applications	IHC-P, WB
Immunogen	A recombinant partial protein sequence (within amino acids 600-781) from the human protein was used as the immunogen for the Catenin Beta antibody.
Storage	Aliquot the Catenin Beta antibody and store frozen at -20°C or colder. Avoid repeated freeze-thaw cycles.
Note	For research use only
Formula	0.2 mg/ml in 1X PBS with 0.1 mg/ml BSA (US sourced), 0.05% sodium azide
Isotype	Mouse IgG2, kappa
Clonality	Monoclonal
Uniprot ID	P35222
Hazard Information	This Catenin Beta antibody is available for research use only.
Dilution Range	Western blot: 1-2ug/ml, Immunohistochemistry (FFPE): 1-2ug/ml for 30 min at RT
Expiration Date	12 months from date of receipt.



Analysis of a HuProt (TM) microarray con...



Western blot testing of human RH30 cell ...



IHC staining of FFPE human salivary glan...