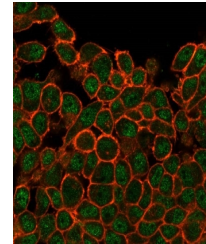


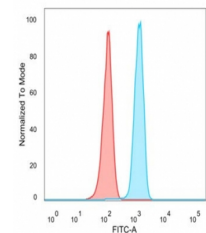
## Product Datasheet

### SATB1 Antibody (orb1823660)

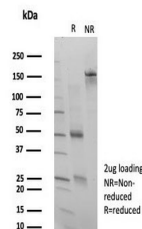
<b>Description</b>	The homeoproteins CCAAT displacement protein (CDP) and special AT-rich sequence binding protein 1 (S...
<b>Species/Host</b>	Mouse
<b>Reactivity</b>	Human
<b>Conjugation</b>	Unconjugated
<b>Tested Applications</b>	FACS, IF
<b>Immunogen</b>	Recombinant full-length human SATB1 protein was used as the immunogen for the SATB1 antibody.
<b>Storage</b>	Aliquot the SATB1 antibody and store frozen at -20°C or colder. Avoid repeated freeze-thaw cycles.
<b>Note</b>	For research use only
<b>Formula</b>	1 mg/ml in 1X PBS; BSA free, sodium azide free
<b>Isotype</b>	Mouse IgG
<b>Clonality</b>	Monoclonal
<b>Uniprot ID</b>	<b>Q01826</b>
<b>Hazard Information</b>	This SATB1 antibody is available for research use only.
<b>Dilution Range</b>	Flow cytometry: 1-2ug/million cells, Immunofluorescence: 1-2ug/ml
<b>Expiration Date</b>	12 months from date of receipt.



Immunofluorescent staining of PFA-fixed ...



Flow cytometry testing of PFA-fixed huma...



SDS-PAGE analysis of purified, BSA-free ...