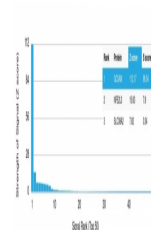


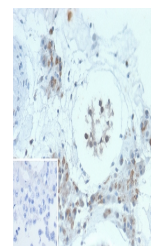
Product Datasheet

HGAL Antibody / GCSAM / GCET2 (orb1823659)

Description	Recognizes a protein identified as HGAL, also called GCSAM (Germinal center-associated signaling and...
Species/Host	Mouse
Reactivity	Human
Conjugation	Unconjugated
Tested Applications	IHC-P
Immunogen	A recombinant partial protein sequence (within amino acids 1-200) from the human protein was used as the immunogen for the GCSAM antibody.
Storage	Aliquot the GCSAM antibody and store frozen at -20°C or colder. Avoid repeated freeze-thaw cycles.
Note	For research use only
Formula	0.2 mg/ml in 1X PBS with 0.1 mg/ml BSA (US sourced), 0.05% sodium azide
Isotype	Mouse IgG1, kappa
Clonality	Monoclonal
Uniprot ID	Q8N6F7
Hazard Information	This GCSAM antibody is available for research use only.
Dilution Range	Immunohistochemistry (FFPE): 1-2ug/ml for 30 min at RT
Expiration Date	12 months from date of receipt.



Analysis of a HuProt (TM) microarray con...



IHC staining of FFPE human testis tissue...