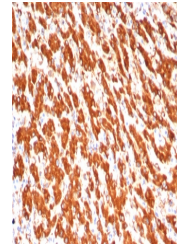


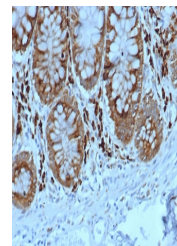
Product Datasheet

ALDH1L1 Antibody (orb1823643)

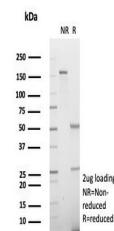
Description	Aldehyde dehydrogenases (ALDHs) mediate NADP+-dependent oxidation of aldehydes into acids during det...
Species/Host	Mouse
Reactivity	Human
Conjugation	Unconjugated
Tested Applications	IHC-P
Immunogen	A recombinant fragment of human ALDH1L1 protein was used as the immunogen for the ALDH1L1 antibody.
Storage	Aliquot the ALDH1L1 antibody and store frozen at -20°C or colder. Avoid repeated freeze-thaw cycles.
Note	For research use only
Formula	0.2 mg/ml in 1X PBS with 0.1 mg/ml BSA (US sourced), 0.05% sodium azide
Isotype	Mouse IgG
Clonality	Monoclonal
Uniprot ID	075891
Hazard Information	This ALDH1L1 antibody is available for research use only.
Dilution Range	Immunohistochemistry (FFPE): 1-2ug/ml for 30 min at RT
Expiration Date	12 months from date of receipt.



IHC staining of FFPE human hepatocellular carcinoma tissue



IHC staining of FFPE human colon tissue



SDS-PAGE analysis of purified, BSA-free antibody