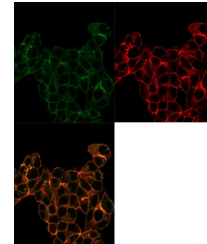


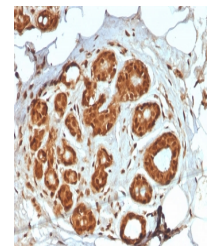
Product Datasheet

Lactoferrin Antibody / LTF (orb1823628)

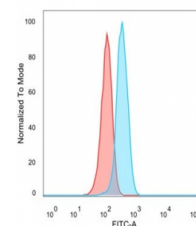
Description	Ferritin and transferrins manage necessary iron-binding functions for iron metabolism. Transferrins ...
Species/Host	Mouse
Reactivity	Human
Conjugation	Unconjugated
Tested Applications	FACS, IF, IHC-P
Immunogen	A recombinant partial protein sequence (within amino acids 614-645) from the human protein was used as the immunogen for the Lactotransferrin antibody.
Storage	Aliquot the Lactotransferrin antibody and store frozen at -20°C or colder. Avoid repeated freeze-thaw cycles.
Note	For research use only
Formula	0.2 mg/ml in 1X PBS with 0.1 mg/ml BSA (US sourced), 0.05% sodium azide
Isotype	Mouse IgG2, kappa
Clonality	Monoclonal
Uniprot ID	P02788
Hazard Information	This Lactotransferrin antibody is available for research use only.
Dilution Range	Flow cytometry: 1-2ug/million cells, Immunofluorescence: 1-2ug/ml, Immunohistochemistry (FFPE): 1-2ug/ml for 30 min at RT
Expiration Date	12 months from date of receipt.



Immunofluorescent staining of PFA-fixed ...



IHC staining of FFPE human breast tissue...



Flow cytometry testing of PFA-fixed huma...