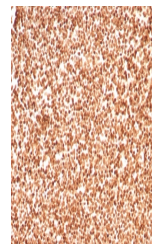


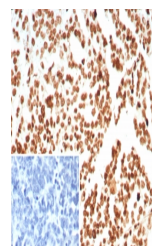
Product Datasheet

Histone H1 Antibody (orb1823623)

Description	Eukaryotic histones are basic and water-soluble nuclear proteins that form hetero-octameric nucleoso...
Species/Host	Mouse
Reactivity	Human
Conjugation	Unconjugated
Tested Applications	IHC-P
Immunogen	Nuclei of human leukemia biopsy cells were used as the immunogen for the Histone H1 antibody.
Storage	Aliquot the Histone H1 antibody and store frozen at -20°C or colder. Avoid repeated freeze-thaw cycles.
Note	For research use only
Formula	0.2 mg/ml in 1X PBS with 0.1 mg/ml BSA (US sourced), 0.05% sodium azide
Isotype	Mouse IgG2b, kappa
Clonality	Recombinant
Hazard Information	This Histone H1 antibody is available for research use only.
Dilution Range	Immunohistochemistry (FFPE): 1-2ug/ml for 30 min at RT
Expiration Date	12 months from date of receipt.



IHC staining of FFPE human lymph node ti...



IHC staining of FFPE human ovarian carci...