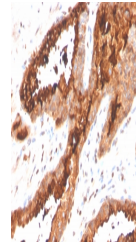


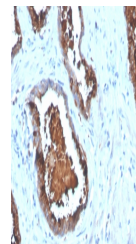
Product Datasheet

PSAP Antibody / Prostate Specific Acid Phosphatase (orb1823598)

Description	Prostatic Acid Phosphatase (PSAP or PAP) is a member of the histidine acid phosphatase family. It is...
Species/Host	Rabbit
Reactivity	Human
Conjugation	Unconjugated
Tested Applications	IHC-P
Immunogen	A recombinant partial protein sequence (within amino acids 1-100) from the human protein was used as the immunogen for the Prostatic acid phosphatase antibody.
Storage	Aliquot the Prostatic acid phosphatase antibody and store frozen at -20°C or colder. Avoid repeated freeze-thaw cycles.
Note	For research use only
Formula	0.2 mg/ml in 1X PBS with 0.1 mg/ml BSA (US sourced), 0.05% sodium azide
Isotype	Rabbit IgG, kappa
Clonality	Recombinant
Uniprot ID	P15309
Hazard Information	This Prostatic acid phosphatase antibody is available for research use only.
Dilution Range	Immunohistochemistry (FFPE): 1-2ug/ml for 30 min at RT
Expiration Date	12 months from date of receipt.



IHC staining of FFPE human prostate carc...



IHC staining of FFPE human prostate carc...