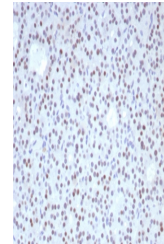


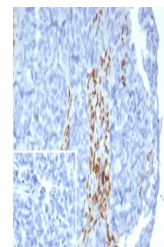
Product Datasheet

FOXL2 Antibody (orb1823590)

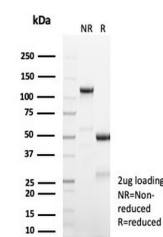
| | |
|----------------------------|---|
| Description | FOXL2 is a critical factor essential for ovary differentiation and maintenance, and repression of th... |
| Species/Host | Rabbit |
| Reactivity | Human |
| Conjugation | Unconjugated |
| Tested Applications | IHC-P |
| Immunogen | Recombinant full-length human FOXL2 protein was used as the immunogen for the FOXL2 antibody. |
| Storage | Aliquot the FOXL2 antibody and store frozen at -20°C or colder. Avoid repeated freeze-thaw cycles. |
| Note | For research use only |
| Formula | 0.2 mg/ml in 1X PBS with 0.1 mg/ml BSA (US sourced), 0.05% sodium azide |
| Isotype | Rabbit IgG, kappa |
| Clonality | Recombinant |
| Uniprot ID | P58012 |
| Hazard Information | This FOXL2 antibody is available for research use only. |
| Dilution Range | Immunohistochemistry (FFPE): 1-2ug/ml for 30 min at RT |
| Expiration Date | 12 months from date of receipt. |



IHC staining of FFPE human parathyroid t...



IHC staining of FFPE human ovarian carci...



SDS-PAGE analysis of purified, BSA-free ...