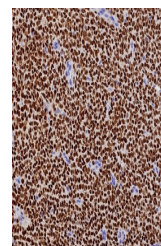


Product Datasheet

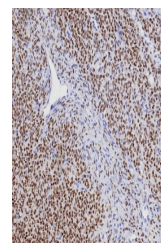
FOXL2 Antibody (orb1823587)

Description	FOXL2 is a critical factor essential for ovary differentiation and maintenance, and repression of th...
Species/Host	Rabbit
Reactivity	Human
Conjugation	Unconjugated
Tested Applications	IHC-P
Immunogen	Recombinant full-length human FOXL2 protein was used as the immunogen for the recombinant FOXL2 antibody.
Storage	Aliquot the recombinant FOXL2 antibody and store frozen at -20°C or colder. Avoid repeated freeze-thaw cycles.
Note	For research use only
Formula	0.2 mg/ml in 1X PBS with 0.1 mg/ml BSA (US sourced), 0.05% sodium azide
Isotype	Rabbit IgG, kappa
Clonality	Recombinant
Uniprot ID	P58012
Hazard Information	This recombinant FOXL2 antibody is available for research use only.
Dilution Range	Immunohistochemistry (FFPE): 1-2ug/ml for 30 min at RT
Expiration Date	12 months from date of receipt.

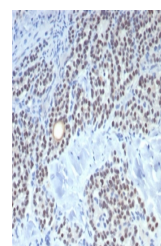


FFPE human ovarian adult granulosa cell

...



IHC staining of FFPE human ovarian adult...



IHC staining of FFPE human parathyroid t...