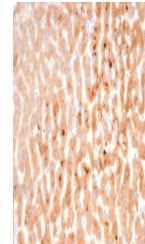


Product Datasheet

Bradykinin Antibody / Kininogen (orb1823547)

| | |
|----------------------------|--|
| Description | Kininogen is a 644 amino acid precursor protein that is expressed by the KNG1 gene and is secreted i... |
| Species/Host | Mouse |
| Reactivity | Human |
| Conjugation | Unconjugated |
| Tested Applications | IHC-P |
| Immunogen | A recombinant partial protein sequence (within amino acids 1-200) from the human protein was used as the immunogen for the Kininogen 1 antibody. |
| Storage | Aliquot the Kininogen 1 antibody and store frozen at -20°C or colder. Avoid repeated freeze-thaw cycles. |
| Note | For research use only |
| Formula | 0.2 mg/ml in 1X PBS with 0.1 mg/ml BSA (US sourced), 0.05% sodium azide |
| Isotype | Mouse IgG1, kappa |
| Clonality | Monoclonal |
| Uniprot ID | P01042 |
| Hazard Information | This Kininogen 1 antibody is available for research use only. |
| Dilution Range | Immunohistochemistry (FFPE): 1-2ug/ml for 30 min at RT |
| Expiration Date | 12 months from date of receipt. |



IHC staining of FFPE human liver tissue ...