

Product Datasheet

Somatostatin Antibody / Neuronostatin (orb1823537)

Description	Somatostatin is a regulatory hormone that is expressed throughout the body and inhibits the release of numerous secondary hormones by binding to highaffinity G protein-coupled somatostatin receptors. This cyclic tetradecapeptide inhibits the secretion of many important hormones, including somatotropin (also designated growth hormone, or GH), Insulin and glucagon. Somatostatin is found in both the hypothalamus and pancreas. Somatostatin is thought to be involved in the regulation of Insulin synthesis. The hormone somatostatin has active 14 amino acid and 28 amino acid forms that are produced by alternate cleavage of the single preproprotein encoded by this gene. In the cerebellum, Somatostatin-14 and Somatostatin-28 are highly expressed at birth and in the adult stage, respectively. Somatostatin affects rates of neurotransmission in the central nervous system and proliferation of both normal and tumorigenic cells. The gene encoding Somatostatin maps to human chromosome 3q27.3.
Species/Host	Rabbit
Reactivity	Human
Conjugation	Unconjugated
Tested Applications	IHC-P
Immunogen	A recombinant fragment of human protein was used as the immunogen for the Somatostatin antibody.
Storage	Aliquot the Somatostatin antibody and store frozen at -20°C or colder. Avoid repeated freeze-thaw cycles.
Note	For research use only
Formula	1 mg/ml in 1X PBS; BSA free, sodium azide free
Isotype	Rabbit IgG, kappa
Clonality	Recombinant

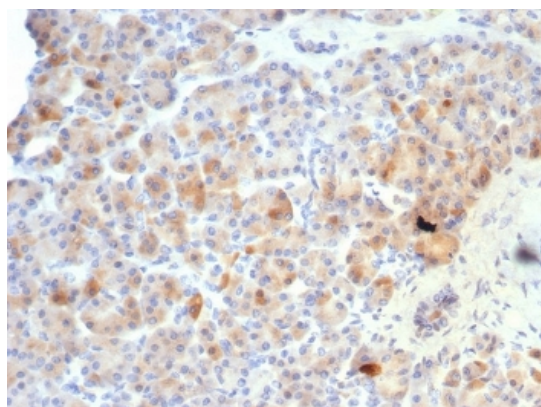
Biorbyt Ltd.

7 Signet Court, Swann's Road,
Cambridge, CB5 8LA, United Kingdom
Email: info@biorbyt.com, support@biorbyt.com
Phone: [+44 \(0\) 1223 859-353](tel:+44(0)1223859353) | Fax: [+1 \(415\) 651-8558](tel:+1(415)6518558)

Biorbyt LLC.

68 TW Alexander Drive,
Durham, NC, 27713, United States
Email: info@biorbyt.com, support@biorbyt.com
Phone: [+1 \(415\) 906-5211](tel:+1(415)9065211) | Fax: [+1 \(415\) 651-8558](tel:+1(415)6518558)

Clone Number	SST/7200R
Antibody Type	Primary Antibody
Uniprot ID	P61278
Hazard Information	This Somatostatin antibody is available for research use only.
Dilution Range	Immunohistochemistry (FFPE): 1-2ug/ml for 30 min at RT
Expiration Date	12 months from date of receipt.



IHC staining of FFPE human pancreas tissue with Somatostatin antibody (clone SST/7200R). HIER: boil tissue sections in pH9 10 mM Tris with 1 mM EDTA for 20 min and allow to cool before testing.

Biorbyt Ltd.

7 Signet Court, Swann's Road,
Cambridge, CB5 8LA, United Kingdom
Email: info@biorbyt.com, support@biorbyt.com
Phone: [+44 \(0\) 1223 859-353](tel:+44(0)1223859353) | Fax: [+1 \(415\) 651-8558](tel:+1(415)6518558)

Biorbyt LLC.

68 TW Alexander Drive,
Durham, NC, 27713, United States
Email: info@biorbyt.com, support@biorbyt.com
Phone: [+1 \(415\) 906-5211](tel:+1(415)9065211) | Fax: [+1 \(415\) 651-8558](tel:+1(415)6518558)