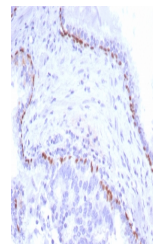


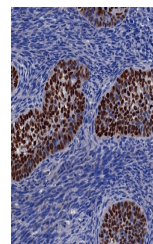
Product Datasheet

p40 / deltaNp63 Antibody (orb1823519)

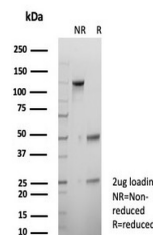
Description	p63 consists of two major isoforms-TAp63 and delta-Np63. These isoforms differ in the structure of t...
Species/Host	Rabbit
Reactivity	Human
Conjugation	Unconjugated
Tested Applications	IHC-P
Immunogen	A recombinant partial protein sequence (within amino acids 1-200) from the human protein was used as the immunogen for the p40 antibody.
Storage	Aliquot the p40 antibody and store frozen at -20°C or colder. Avoid repeated freeze-thaw cycles.
Note	For research use only
Formula	1 mg/ml in 1X PBS; BSA free, sodium azide free
Isotype	Rabbit IgG, kappa
Clonality	Recombinant
Uniprot ID	Q9H3D4
Hazard Information	This p40 antibody is available for research use only.
Dilution Range	Immunohistochemistry (FFPE): 1-2ug/ml for 30 min at RT
Expiration Date	12 months from date of receipt.



IHC staining of FFPE human prostate carc...



IHC staining of FFPE human lung carcinom...



SDS-PAGE analysis of purified, BSA-free ...