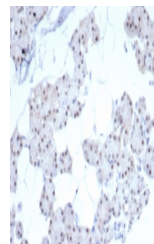


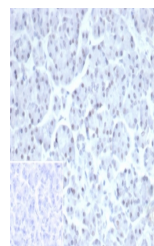
Product Datasheet

PHOX2B Antibody (orb1823509)

Description	Paired homeobox protein 2B (PHOX2B) is a transcription factor located on chromosome 4p13, which is e...
Species/Host	Rabbit
Reactivity	Human
Conjugation	Unconjugated
Tested Applications	IHC-P
Immunogen	A recombinant fragment of human protein was used as the immunogen for the Paired-like homeobox 2B antibody.
Storage	Aliquot the Paired-like homeobox 2B antibody and store frozen at -20°C or colder. Avoid repeated freeze-thaw cycles.
Note	For research use only
Formula	0.2 mg/ml in 1X PBS with 0.1 mg/ml BSA (US sourced), 0.05% sodium azide
Isotype	Rabbit IgG, kappa
Clonality	Recombinant
Uniprot ID	Q99453
Hazard Information	This Paired-like homeobox 2B antibody is available for research use only.
Dilution Range	Immunohistochemistry (FFPE): 1-2ug/ml for 30 min at RT
Expiration Date	12 months from date of receipt.



IHC staining of FFPE human renal cell ca...



IHC staining of FFPE human pancreas tiss...