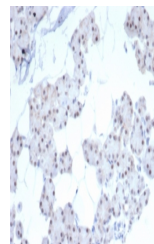


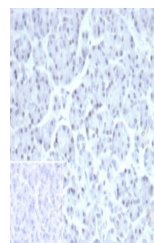
## Product Datasheet

### PHOX2B Antibody (orb1823507)

|                            |  |
|----------------------------|--|
| <b>Description</b>         | Paired homeobox protein 2B (PHOX2B) is a transcription factor located on chromosome 4p13, which is e...              |
| <b>Species/Host</b>        | Rabbit   |
| <b>Reactivity</b>          | Human  |
| <b>Conjugation</b>         | Unconjugated   |
| <b>Tested Applications</b> | IHC-P  |
| <b>Immunogen</b>           | A recombinant fragment of human protein was used as the immunogen for the Paired-like homeobox 2B antibody.          |
| <b>Storage</b>             | Aliquot the Paired-like homeobox 2B antibody and store frozen at -20°C or colder. Avoid repeated freeze-thaw cycles. |
| <b>Note</b>                | For research use only  |
| <b>Formula</b>             | 1 mg/ml in 1X PBS; BSA free, sodium azide free   |
| <b>Isotype</b>             | Rabbit IgG, kappa  |
| <b>Clonality</b>           | Recombinant  |
| <b>Uniprot ID</b>          | <a href="#">Q99453</a>   |
| <b>Hazard Information</b>  | This Paired-like homeobox 2B antibody is available for research use only.  |
| <b>Dilution Range</b>      | Immunohistochemistry (FFPE): 1-2ug/ml for 30 min at RT   |
| <b>Expiration Date</b>     | 12 months from date of receipt.  |



IHC staining of FFPE human renal cell ca...



IHC staining of FFPE human pancreas tiss...