
Product Datasheet

**LDB2 Antibody / LIM domain binding 2
(orb1823476)**

Description

The LIM-only (LMO) proteins, LMO1 and LMO2, are


Species/Host

Mouse

Reactivity

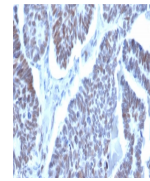
Human

Conjugation

Unconjugated

Tested Applications

FACS, IF, IHC-P



IHC staining of FFPE human papillary thy...

Immunogen

Recombinant full-length human LDB2 protein was used as the immunogen for the LDB2 antibody.

Storage

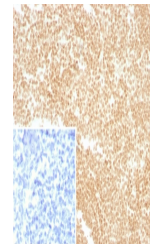
Aliquot the LDB2 antibody and store frozen at -20°C or colder. Avoid repeated freeze-thaw cycles.

Note

For research use only

Formula

0.2 mg/ml in 1X PBS with 0.1 mg/ml BSA (US sourced), 0.05% sodium azide



IHC staining of FFPE human tonsil tissue...

Isotype

Mouse IgG2c, kappa

Clonality

Monoclonal

Uniprot ID

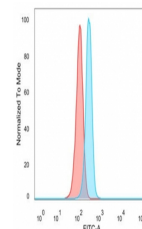
O43679

Hazard Information

This LDB2 antibody is available for research use only.

Dilution Range

Flow cytometry: 1-2ug/million cells, Immunofluorescence: 1-2ug/ml, Immunohistochemistry (FFPE): 1-2ug/ml for 30 min at RT



Flow cytometry testing of PFA-fixed huma...

Expiration Date

12 months from date of receipt.