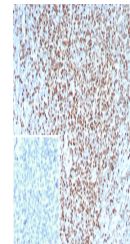


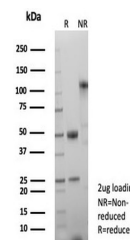
Product Datasheet

LEF1 Antibody / Lymphoid enhancer-binding factor 1 / TCF1 alpha (orb1823434)

Description	Lymphoid Enhancing Factor 1 (LEF1) is a transcription factor that belongs to the TCF/LEF family. LEF...
Species/Host	Rabbit
Reactivity	Human
Conjugation	Unconjugated
Tested Applications	IHC-P
Immunogen	A recombinant partial protein sequence (within amino acids 1-300) from the human protein was used as the immunogen for the Lymphoid enhancer-binding factor 1 antibody.
Storage	Aliquot the Lymphoid enhancer-binding factor 1 antibody and store frozen at -20°C or colder. Avoid repeated freeze-thaw cycles.
Note	For research use only
Formula	0.2 mg/ml in 1X PBS with 0.1 mg/ml BSA (US sourced), 0.05% sodium azide
Isotype	Rabbit IgG, kappa
Clonality	Recombinant
Uniprot ID	Q9UJU2
Hazard Information	This Lymphoid enhancer-binding factor 1 antibody is available for research use only.
Dilution Range	Immunohistochemistry (FFPE): 1-2ug/ml for 30 min at RT
Expiration Date	12 months from date of receipt.



IHC staining of FFPE analysis of human t...



SDS-PAGE analysis of purified, BSA-free ...