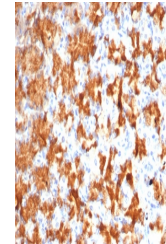


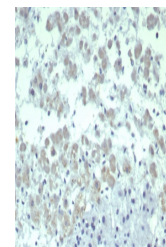
Product Datasheet

IL-2 Antibody (orb1823400)

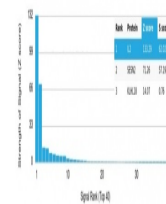
Description	Interleukin-2 (IL-2) is a T cell stimulatory cytokine that induces T cell proliferation and NK cell ...
Species/Host	Mouse
Reactivity	Human
Conjugation	Unconjugated
Tested Applications	IHC-P
Immunogen	A recombinant partial protein sequence (within amino acids 1-153) from the human protein was used as the immunogen for the Interleukin-2 antibody.
Storage	Aliquot the Interleukin-2 antibody and store frozen at -20°C or colder. Avoid repeated freeze-thaw cycles.
Note	For research use only
Formula	0.2 mg/ml in 1X PBS with 0.1 mg/ml BSA (US sourced), 0.05% sodium azide
Isotype	Mouse IgG2, kappa
Clonality	Monoclonal
Uniprot ID	P60568
Hazard Information	This Interleukin-2 antibody is available for research use only.
Dilution Range	Immunohistochemistry (FFPE): 1-2ug/ml for 30 min at RT
Expiration Date	12 months from date of receipt.



IHC staining of FFPE human stomach tissue...



IHC staining of FFPE human adrenal gland...



Analysis of a HuProt (TM) microarray con...