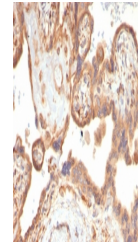


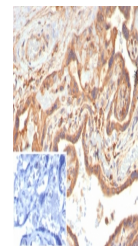
Product Datasheet

VEGF Antibody / Vascular Endothelial Growth Factor (orb1823318)

Description	This mAb recognizes proteins of 19-22kDa (reducing) and 38kDa-44kDa (non-reducing), identified as va...
Species/Host	Rabbit
Reactivity	Human
Conjugation	Unconjugated
Tested Applications	IHC-P
Immunogen	A recombinant partial protein sequence (within amino acids 1-200) from the human protein was used as the immunogen for the Vascular Endothelial Growth Factor antibody.
Storage	Aliquot the Vascular Endothelial Growth Factor antibody and store frozen at -20°C or colder. Avoid repeated freeze-thaw cycles.
Note	For research use only
Formula	1 mg/ml in 1X PBS; BSA free, sodium azide free
Isotype	Rabbit IgG1, kappa
Clonality	Recombinant
Uniprot ID	P15692
Hazard Information	This Vascular Endothelial Growth Factor antibody is available for research use only.
Dilution Range	Immunohistochemistry (FFPE): 1-2ug/ml for 30 min at RT
Expiration Date	12 months from date of receipt.



IHC staining of FFPE human placental tis...



IHC staining of FFPE human placental tis...