
Product Datasheet

**STING1 Antibody / TMEM173 / ERIS / MITA
(orb1823311)**

Description

TMEM173 (transmembrane protein 173), also called

Species/Host

Mouse

Reactivity

Human

Conjugation

Unconjugated

Tested Applications

IHC-P, WB

Immunogen

A recombinant partial protein sequence (within amino acids 190-290) from the human protein was used as the immunogen for the STING1 antibody.

Storage

Aliquot the STING1 antibody and store frozen at -20°C or colder. Avoid repeated freeze-thaw cycles.

Note

For research use only

Formula

0.2 mg/ml in 1X PBS with 0.1 mg/ml BSA (US sourced), 0.05% sodium azide

Isotype

Mouse IgG2c, kappa

Clonality

Monoclonal

Uniprot ID
Q86WV6
Hazard Information

This STING1 antibody is available for research use only.

Dilution Range

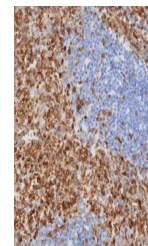
Western blot: 1-2ug/ml, Immunohistochemistry (FFPE): 1-2ug/ml for 30 min at RT

Expiration Date

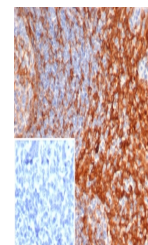
12 months from date of receipt.



Western blot testing of human HDLM-2 cel...



IHC staining of FFPE human spleen tissue...



IHC staining of FFPE human tonsil tissue...