

---

## Product Datasheet

**STING1 Antibody / TMEM173 / ERIS / MITA  
(orb1823308)**

**Description**

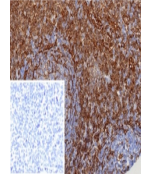
TMEM173 (transmembrane protein 173), also called



ERIS...

**Species/Host**

Rabbit


**Reactivity**

Human

**Conjugation**

Unconjugated

**Tested Applications**

IHC-P

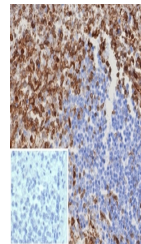
IHC staining of FFPE human tonsil tissue...

**Immunogen**

A recombinant partial protein sequence (within amino acids 190-290) from the human protein was used as the immunogen for the MITA antibody.

**Storage**

Aliquot the MITA antibody and store frozen at -20°C or colder. Avoid repeated freeze-thaw cycles.


**Note**

For research use only

**Formula**

0.2 mg/ml in 1X PBS with 0.1 mg/ml BSA (US sourced), 0.05% sodium azide

IHC staining of FFPE human spleen tissue...

**Isotype**

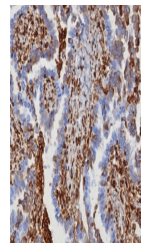
Rabbit IgG, kappa

**Clonality**

Recombinant

**Uniprot ID**
**Q86WV6**
**Hazard Information**

This MITA antibody is available for research use only.


**Dilution Range**

Immunohistochemistry (FFPE): 1-2ug/ml for 30 min at RT

**Expiration Date**

12 months from date of receipt.

IHC staining of FFPE human serous ovary...