
Product Datasheet

**STING1 Antibody / TMEM173 / ERIS / MITA
(orb1823307)**

Description

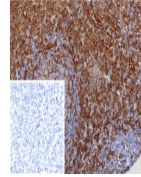
TMEM173 (transmembrane protein 173), also called



ERIS...

Species/Host

Rabbit


Reactivity

Human

Conjugation

Unconjugated

Tested Applications

IHC-P

IHC staining of FFPE human tonsil tissue...

Immunogen

A recombinant partial protein sequence (within amino acids 190-290) from the human protein was used as the immunogen for the MITA antibody.

Storage

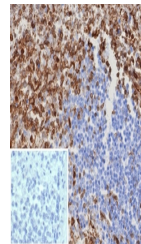
Aliquot the MITA antibody and store frozen at -20°C or colder. Avoid repeated freeze-thaw cycles.

Note

For research use only

Formula

0.2 mg/ml in 1X PBS with 0.1 mg/ml BSA (US sourced), 0.05% sodium azide



IHC staining of FFPE human spleen tissue...

Isotype

Rabbit IgG, kappa

Clonality

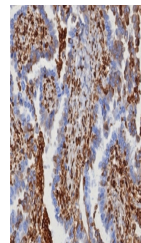
Recombinant

Uniprot ID
Q86WV6
Hazard Information

This MITA antibody is available for research use only.

Dilution Range

Immunohistochemistry (FFPE): 1-2ug/ml for 30 min at RT



IHC staining of FFPE human serous ovary...

Expiration Date

12 months from date of receipt.