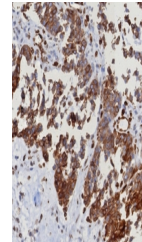


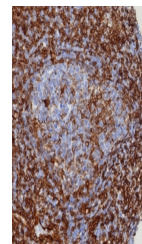
Product Datasheet

STING1 Antibody / TMEM173 / ERIS / MITA (orb1823304)

Description	TMEM173 (transmembrane protein 173), also called STING1 and ERIS (Endoplasmic reticulum interferon) ...
Species/Host	Rabbit
Reactivity	Human
Conjugation	Unconjugated
Tested Applications	IHC-P
Immunogen	A recombinant partial protein sequence (within amino acids 190-290) from the human protein was used as the immunogen for the ERIS antibody.
Storage	Aliquot the STING1 antibody and store frozen at -20°C or colder. Avoid repeated freeze-thaw cycles.
Note	For research use only
Formula	0.2 mg/ml in 1X PBS with 0.1 mg/ml BSA (US sourced), 0.05% sodium azide
Isotype	Rabbit IgG, kappa
Clonality	Recombinant
Uniprot ID	Q86WV6
Hazard Information	This ERIS antibody is available for research use only.
Dilution Range	Immunohistochemistry (FFPE): 1-2ug/ml for 30 min at RT
Expiration Date	12 months from date of receipt.



IHC staining of FFPE human serous ovaria...



IHC staining of FFPE human spleen tissue...