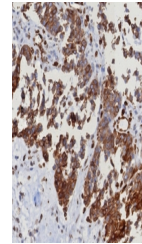


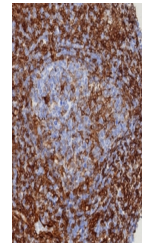
Product Datasheet

STING1 Antibody / TMEM173 / ERIS / MITA (orb1823303)

| | |
|----------------------------|---|
| Description | TMEM173 (transmembrane protein 173), also called STING1 and ERIS (Endoplasmic reticulum interferon) ... |
| Species/Host | Rabbit |
| Reactivity | Human |
| Conjugation | Unconjugated |
| Tested Applications | IHC-P |
| Immunogen | A recombinant partial protein sequence (within amino acids 190-290) from the human protein was used as the immunogen for the ERIS antibody. |
| Storage | Aliquot the STING1 antibody and store frozen at -20°C or colder. Avoid repeated freeze-thaw cycles. |
| Note | For research use only |
| Formula | 1 mg/ml in 1X PBS; BSA free, sodium azide free |
| Isotype | Rabbit IgG, kappa |
| Clonality | Recombinant |
| Uniprot ID | Q86WV6 |
| Hazard Information | This ERIS antibody is available for research use only. |
| Dilution Range | Immunohistochemistry (FFPE): 1-2ug/ml for 30 min at RT |
| Expiration Date | 12 months from date of receipt. |



IHC staining of FFPE human serous ovaria...



IHC staining of FFPE human spleen tissue...