
Product Datasheet

VEGF Antibody / Vascular Endothelial Growth Factor (orb1823266)

Description

This mAb recognizes proteins of 19-22kDa



identified as va...

Species/Host

Rabbit

Reactivity

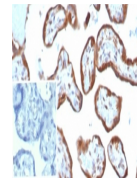
Human

Conjugation

Unconjugated

Tested Applications

IHC-P



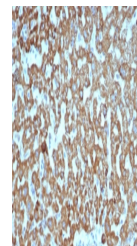
IHC staining of FFPE human placental tis...

Immunogen

A recombinant partial protein sequence (within amino acids 1-200) from the human protein was used as the immunogen for the VEGF antibody.

Storage

Aliquot the VEGF antibody and store frozen at -20°C or colder. Avoid repeated freeze-thaw cycles.



IHC staining of FFPE human liver tissue ...

Note

For research use only

Formula

0.2 mg/ml in 1X PBS with 0.1 mg/ml BSA (US sourced), 0.05% sodium azide

Isotype

Rabbit IgG1, kappa

Clonality

Recombinant

Uniprot ID

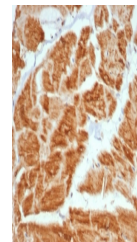
P15692

Hazard Information

This VEGF antibody is available for research use only.

Dilution Range

Immunohistochemistry (FFPE): 1-2ug/ml for 30 min at RT



IHC staining of FFPE human heart tissue ...

Expiration Date

12 months from date of receipt.