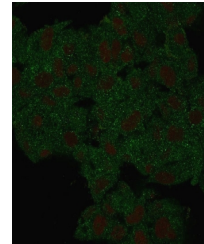


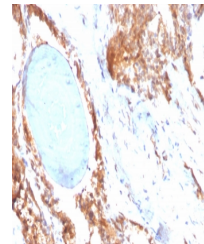
Product Datasheet

HSP90 beta Antibody / HSP90AB1 (orb1823242)

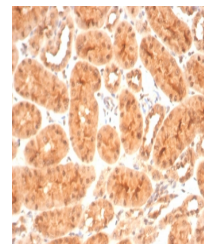
Description	This gene encodes a member of the heat shock protein 90 family; these proteins are involved in signa...
Species/Host	Mouse
Reactivity	Human
Conjugation	Unconjugated
Tested Applications	FACS, IF, IHC-P, WB
Immunogen	Recombinant full-length human protein was used as the immunogen for the HSP90 beta antibody.
Storage	Aliquot the HSP90 beta antibody and store frozen at -20°C or colder. Avoid repeated freeze-thaw cycles.
Note	For research use only
Formula	0.2 mg/ml in 1X PBS with 0.1 mg/ml BSA (US sourced), 0.05% sodium azide
Isotype	Mouse IgG2b, kappa
Clonality	Monoclonal
Uniprot ID	P08238
Hazard Information	This HSP90 beta antibody is available for research use only.
Dilution Range	Flow cytometry: 1-2ug/million cells, Immunofluorescence: 1-2ug/ml, Western blot: 1-2ug/ml, Immunohistochemistry (FFPE): 1-2ug/ml for 30 min at RT
Expiration Date	12 months from date of receipt.



Immunofluorescent staining of PFA-fixed ...



IHC staining of FFPE human prostate tiss...



IHC staining of FFPE cat kidney with HSP...