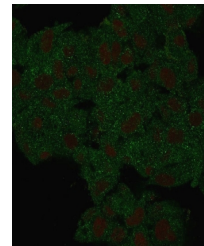


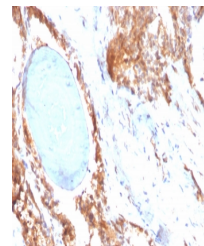
## Product Datasheet

### HSP90 beta Antibody / HSP90AB1 (orb1823240)

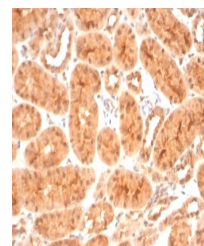
<b>Description</b>	This gene encodes a member of the heat shock protein 90 family; these proteins are involved in signa...
<b>Species/Host</b>	Mouse
<b>Reactivity</b>	Human
<b>Conjugation</b>	Unconjugated
<b>Tested Applications</b>	FACS, IF, IHC-P, WB
<b>Immunogen</b>	Recombinant full-length human protein was used as the immunogen for the HSP90 beta antibody.
<b>Storage</b>	Aliquot the HSP90 beta antibody and store frozen at -20°C or colder. Avoid repeated freeze-thaw cycles.
<b>Note</b>	For research use only
<b>Formula</b>	1 mg/ml in 1X PBS; BSA free, sodium azide free
<b>Isotype</b>	Mouse IgG2b, kappa
<b>Clonality</b>	Monoclonal
<b>Uniprot ID</b>	<b>P08238</b>
<b>Hazard Information</b>	This HSP90 beta antibody is available for research use only.
<b>Dilution Range</b>	Flow cytometry: 1-2ug/million cells, Immunofluorescence: 1-2ug/ml, Western blot: 1-2ug/ml, Immunohistochemistry (FFPE): 1-2ug/ml for 30 min at RT
<b>Expiration Date</b>	12 months from date of receipt.



Immunofluorescent staining of PFA-fixed ...



IHC staining of FFPE human prostate tiss...



IHC staining of FFPE cat kidney with HSP...