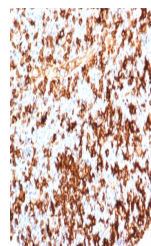


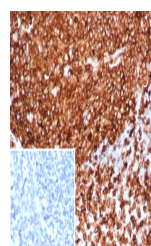
## Product Datasheet

### HLA-DR Antibody (MHC II) (orb1823228)

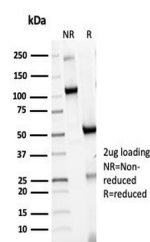
|                            |   |
|----------------------------|---|
| <b>Description</b>         | This mAb reacts with the beta-chain of HLA-DR antigen, a member of MHC class II molecules. It does n...                                     |
| <b>Species/Host</b>        | Rabbit  |
| <b>Reactivity</b>          | Human   |
| <b>Conjugation</b>         | Unconjugated  |
| <b>Tested Applications</b> | IHC-P   |
| <b>Immunogen</b>           | A recombinant partial protein sequence (within amino acids 1-200) from the human protein was used as the immunogen for the HLA-DR antibody. |
| <b>Storage</b>             | Aliquot the HLA-DR antibody and store frozen at -20°C or colder. Avoid repeated freeze-thaw cycles.   |
| <b>Note</b>                | For research use only   |
| <b>Formula</b>             | 1 mg/ml in 1X PBS; BSA free, sodium azide free  |
| <b>Isotype</b>             | Rabbit IgG, kappa   |
| <b>Clonality</b>           | Recombinant   |
| <b>Uniprot ID</b>          | <b>P01903</b>   |
| <b>Hazard Information</b>  | This HLA-DR antibody is available for research use only.  |
| <b>Dilution Range</b>      | Immunohistochemistry (FFPE): 1-2ug/ml for 30 min at RT  |
| <b>Expiration Date</b>     | 12 months from date of receipt.   |



IHC staining of FFPE human tonsil tissue...



IHC staining of FFPE human tonsil tissue...



SDS-PAGE analysis of purified, BSA-free ...